



Centre Drive, Epping, CM16

BUTLER & STAG



**Spanning circa 1500 sq ft this stunning semi detached family home offers an abundance of entertaining space with wonderful kerb appeal.**



## Freehold

- Semi Detached Family Home
- Beautifully Presented
- Off-Street Parking For 3 Vehicles
- Four Bedrooms/Two Bathroom
- Open Plan Kitchen/Dining Area
- Seconds Walk To Epping Station

Internally the ground floor accommodation comprises of an open plan kitchen/diner with bi-folding doors leading out to the rear garden which would be any families focal part of the home, separate formal living room and a WC.

On the first floor there are four bedrooms with the master suite offering an en-suite bathroom. The first floor also offers a separate family bathroom to accommodate the further three double bedrooms.

The rear garden has been landscaped and laid out in such a way to offer maximum amount of privacy. The Garden also offers outside entertaining space with the patio area and sitting area with access to the side via a secure wooden gate leading to the front access along with a detached home office. There is also an attached garage which allows front and rear access along with plumbing and power providing further utility space. The Property also has planning for a side extension EPF/0648/19

Centre Drive is in a prime location within the historic market town of Epping. It is ideally located for local amenities including the High Street with a comprehensive selection of shops, pubs and restaurants. Transport links into London are excellent and there are several well regarded state and private schools within easy reach, some with transport pick up points locally.

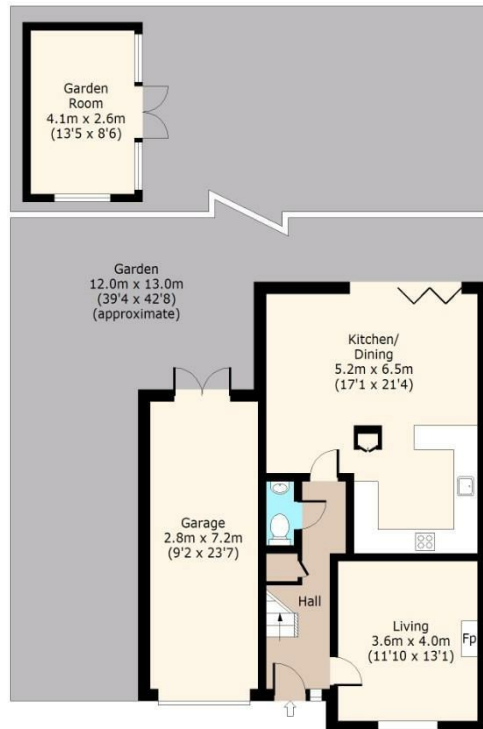




Centre Drive, CM16

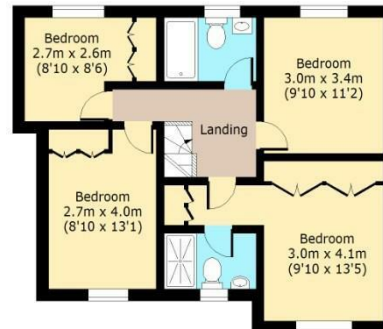
**Ground Floor**

Approx. 76 Sq. meters (818 Sq. feet)



**First Floor**

Approx. 61 Sq. meters (657 Sq. feet)



Total area: approx. 137 Sq. meters (1475 Sq. feet)  
For illustration purposes only - not to scale  
www.lpaplus.com



**BUTLER & STAG**

☎ 01992 667666

🏠 4 Forest Drive, Theydon Bois, Essex, CM16 7EY

✉ theydon@butlerandstag.com

[www.butlerandstag.uk](http://www.butlerandstag.uk)

IMPORTANT NOTICE - These particulars have been prepared in good faith and they are not intended to constitute part of an offer or contract. We have not performed a structural survey on this property and the services, appliances and specific fittings have not been tested. All photographs, measurements, floor plans and distances referred to are given as a guide and should not be relied upon.